



COOK Stack Damper Assembly

DATE: _____

Butterfly Damper

PROJECT: _____

LOCATION: _____

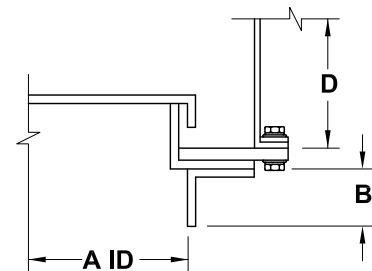
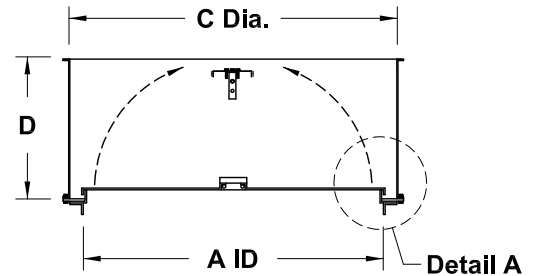
DIMENSION DATA

Size	A	B	C Dia.	D	Minimum CFM to open dampers		Maximum CFM
					Steel	Alum.	
10*	10-1/2	1-1/2	14	8	---	630	1300
12*	12-1/2	1-1/2	16	8	---	905	2100
14*	14-1/2	1-1/2	18	10	---	1210	3000
16*	16-1/2	1-1/2	21	10	---	1600	4600
18*	18-1/2	1-1/2	23	12	---	2010	6000
20*	20-1/2	1-1/2	25	12	---	2480	7600
24	24-1/2	2	31-1/4	19-1/8	5220	3950	14700
28*	28-1/2	2	33	16	---	5350	19700
30	30-1/2	2	37-1/4	23-5/8	7130	6050	23700
32*	32-1/2	2	37-1/4	18	---	6600	26300
36	36-1/2	2	43-1/4	25-5/8	11000	7620	39900
42	42-1/2	2	49-1/4	27-7/8	13550	11050	55100
48	48-1/2	2	55-1/4	31-1/4	16420	12820	72800
54	54-1/2	2	61-1/4	35-1/4	18650	16500	92800
60	60-1/2	2	67-1/4	36-1/2	22740	19120	115300

ALL DIMENSIONS IN INCHES. WEIGHTS IN LBS.

* AVAILABLE IN ALUMINUM ONLY

MAX. OPERATING TEMP. 325°F



Detail "A"

STANDARD CONSTRUCTION FEATURES:

Aluminum construction (sizes 10-20, 28, 32) - Galvanized steel butterfly dampers and painted steel housing (sizes 24, 30, 36-60) - Corrosion resistant fasteners.

ACCESSORIES

1. DISCHARGE GUARD
2. ALUMINUM DAMPERS
3. ALUMINUM CONSTRUCTION

QTY	MARK	SIZE	CFM	ACCESSORIES		